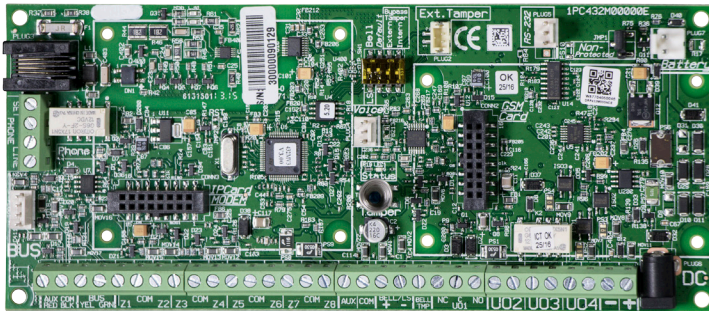


2GIG VARIO MODULES

WORKS WITH ALL VARIO PANELS

VARIO MAIN BOARD

Model #: 2GIG-VAR-BRD



The Vario Main Panel Board offers install flexibility with features like, selectable bell output and case tamper, for enclosure door and wall. The Easy to install plug-in BUS header saves time in wiring. Each panel provides four programmable outputs, 1 NO/NC Dry Contact Relay and 3 programmable outputs.

The Vario Main Board comes equipped with:

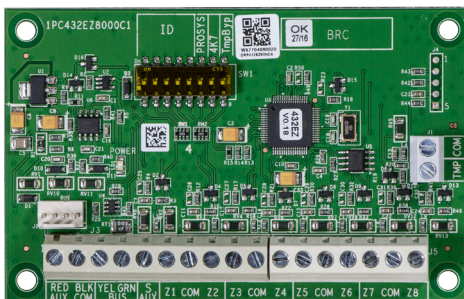
- 8 hardwire zones
- 4 programmable outputs
- Supports 4 wire smoke detectors with auto reset
- Internal and external tamper switches
- Barrel or terminal connections for power
- Supervised bell or speaker output

| | |
|--------------------------------------|--|
| Input Power: | AC/DC Adaptor 100-240V 50/60Hz 14.4V – 1.5A, 4A |
| Current Consumption: | 60 mA, typical / 70 mA, maximum |
| Rechargeable Standby Battery: | 1.5A PS: 12 Volts up to 7 Amp-Hours, typical 4A PS: 12 Volts up to 17 Amp-Hours, typical |
| Maximum Charging Time: | 24 Hours |
| Auxiliary Power: | 1.5A PS: Total current 800mA; Maximum Aux = 500mA; Maximum BUS (AUX RED) = 800mA 4A PS: Total current 1,500mA; Maximum Aux = 500mA; Maximum BUS (AUX RED) = 800mA Bell/LS (External): 12V DC @ 500 mA, maximum |
| Programmable Outputs: | U01: Dry contact relay (24V, 1 Amps) U02-U04: 100 mA, up to relay |
| Main Enclosure Dimensions: | 2GIG-VAR-BOX Polycarbonate Box 11.42" W x 10" H x 3.82" D (290 mm x 254 mm x 97 mm) |
| Bell/LS (External): | Bell/LS (External) Sounder Output: 12 VDC @ 900 mA, maximum *: Total Current Bell+Aux = 1.5A |
| Fuses: | F1: Battery Power 3.0 A F2: Auxiliary Power 2.0 A F3: Bell/Loudspeaker Power 1.0 A |
| Operating Temperature: | 14°F to 131°F (-10°C to 55°C) |
| Storage Temperature: | -4°F to 140°F (-20°C to 60°C) |
| Weight: | 0.31lbs (0.14Kg) |

WORKS WITH ALL VARIO PANELS

VARIO 8 ZONE EXPANSION BOARD

Model #: 2GIG-VAR-ZE8

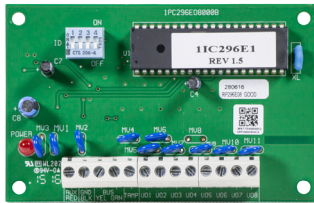


Adds an additional 8 hardwire zones to the Vario panel. Installs on the keypad BUS to accommodate remote mounting for easier wire runs. Includes an on-board tamper for installation in the 2GIG-VAR-ACCBOX.

| | |
|---------------------------------|---|
| Power: | 13.8VDC +/- 10% |
| Max Current Consumption: | 25 mA, typical / 30 mA, maximum |
| Main Panel Connection: | RS485, 4 Wire Bus, up to 984 ft. (300m) from Main Panel |
| Auxiliary Outputs: | AUX: Dry contact relay (24V, 1 Amps) |
| Dimensions: | 4.13" W x 2.6" H x 0.71" D (105 mm x 66 mm x 18 mm) |
| Operating Temperature: | 14°F to 131°F (-10°C to 55°C) |
| Storage Temperature: | -4°F to 140°F (-20°C to 60°C) |

VARIO 8 OUTPUT EXPANDER

Model #: 2GIG-VAR-8OUT



Adds eight programmable, low current outputs for triggering devices, such as CCTV, Access Control and Building Automation systems. This output expander installs as a keypad bus device, enabling remote configuration changes of a particular output, saving potential truck rolls and the flexibility of remote mounting. Includes an on-board tamper for installation in the 2GIG-VAR-ACCBX.

| | |
|---------------------------------|---|
| Power: | 13.8 VDC +/- 10% |
| Max Current Consumption: | 25 mA, typical / 160 mA, maximum |
| Main Panel Connection: | RS485, 4 Wire Bus, up to 984 ft. (300m) from Main Panel |
| Contacts: | 4 Form C (SPDT) Relays; 5A / 24 VDC |
| Dimensions: | 4.13" W x 2.6" H x 0.71" D (105 mm x 66 mm x 18 mm) |
| Operating Temperature: | 14°F to 131°F (-10°C to 55°C) |
| Storage Temperature: | -4°F to 140°F (-20°C to 60°C) |

WORKS WITH ALL VARIO PANELS

VARIO 4 OUTPUT EXPANDER

Model #: 2GIG-VAR-4ROUT



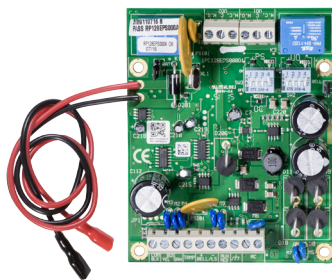
Adds four programmable NO/NC dry contact relays for triggering high current loads, such as magnet locks and door strikes. This output expander installs as a keypad bus device, enabling remote configuration changes of a particular output, saving potential truck rolls and the flexibility of remote mounting. Includes an on-board tamper for installation in the 2GIG-VAR-ACCBX.

| | |
|---------------------------------|---|
| Power: | 13.8 VDC +/- 10% |
| Max Current Consumption: | 25 mA, typical / 160 mA, maximum |
| Main Panel Connection: | RS485, 4 Wire Bus, up to 984 ft. (300m) from Main Panel |
| Contacts: | 4 Form C (SPDT) Relays; 5A / 24 VDC |
| Dimensions: | 4.13" W x 2.6" H x 0.71" D (105 mm x 66 mm x 18 mm) |
| Operating Temperature: | 14°F to 131°F (-10°C to 55°C) |
| Storage Temperature: | -4°F to 140°F (-20°C to 60°C) |

WORKS WITH ALL VARIO PANELS

VARIO 3A SWITCHING POWER SUPPLY

Model #: 2GIG-VAR-PS3A



The power supply expansion module, providing total current capacity of up to 3 Amps with extensive remote diagnostics and supervision features, including tamper protection, over-current protection, two user programmable outputs and a dedicated siren driver.

| | |
|---------------------------------|---|
| Power: | 13.8 VDC +/- 10% |
| Max Current Consumption: | 25 mA, typical / 160 mA, maximum |
| Main Panel Connection: | RS485, 4 Wire Bus, up to 984 ft. (300m) from Main Panel |
| Contacts: | 4 Form C (SPDT) Relays; 5A / 24 VDC |
| Dimensions: | 4.13" W x 2.6" H x 0.71" D (105 mm x 66 mm x 18 mm) |
| Operating Temperature: | 14°F to 131°F (-10°C to 55°C) |
| Storage Temperature: | -4°F to 140°F (-20°C to 60°C) |

WORKS WITH ALL VARIO PANELS