

LINEAR™

Smart Surveillance



The Future of Smart Surveillance and Access Control

Finally, dealers & integrators get the comprehensive, yet easy-to-deploy solution they've been waiting for.

The bar is higher today. Your customers are looking for smarter commercial security and access control based on an advanced technology foundation.

The Linear® Intelligent Surveillance & Access Control System is a tightly integrated solution that features built-in IntelliVision® analytics directly in the camera itself.

Linear simplifies smart surveillance and access control for dealers and integrators giving them a single-source solution that allows dealers to improve customer satisfaction while minimizing reliability and warranty issues.

And, Linear Intelligent Surveillance is the only video surveillance solution that is fully integrated with the Linear e3 Access Control ecosystem.



IV200 CAMERA LINE



2MP Resolution
Standard IntelliVision® Analytics
Object, Motion, Detection
and Classification



IV400 CAMERA LINE



5MP Resolution
Advanced IntelliVision® Analytics
AI Motion, Tamper, Intrusion, Line Crossing,
Object Left/Removed, Loitering, and more
*Analyzes video content in real-time
providing alerts and actionable intelligence*



NVRs NETWORK VIDEO RECORDERS

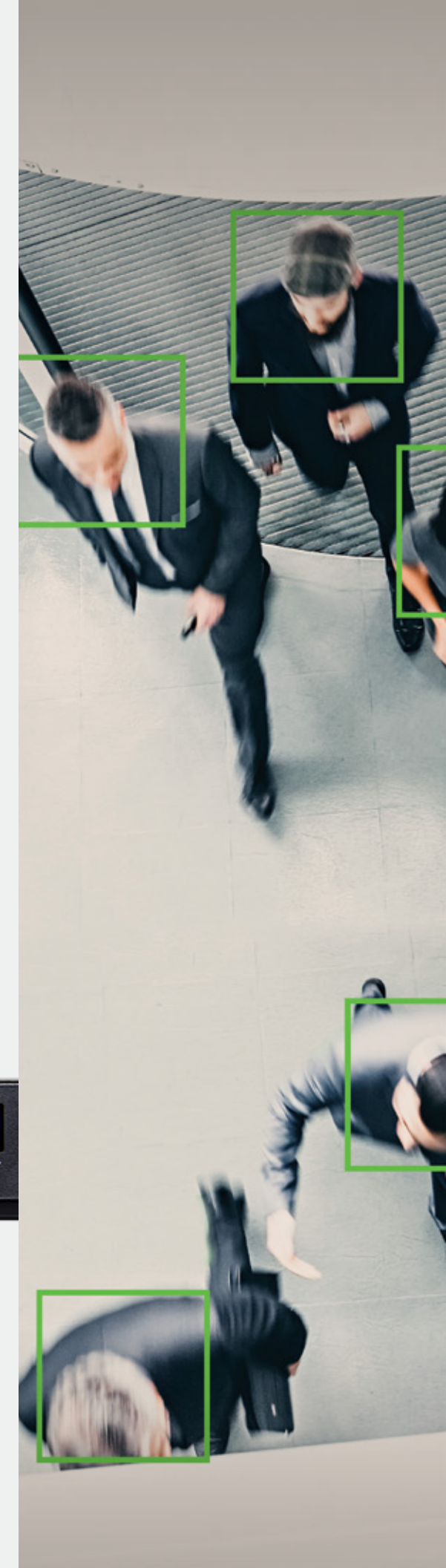
- 8 channel with 2TB WD Purple HDD storage
- 16 channel with 4TB WD Purple HDD storage

SERIES INTEGRATION

Comprehensive embedded OS and browser-managed access systems

IntelliVision®

Artificial Intelligence (AI) processing at the camera edge provides active monitoring and notification for specific event classifications



Value for You...

Simplified Installation

Cameras are designed to be automatically discovered by Linear NVRs

- System configuration accomplished from any browser
- ONVIF support for non Linear cameras
- Auto discover and auto configuration minimizes installation time
- Simple association from Linear Access Control
- Analytics at the edge, integrated in the camera provides smarter and faster event notification
- Motorized auto focus camera models minimize installation and setup

Single-source Solution

Fully integrated solution that is easy to acquire and deploy

- Efficient support and system expansion from one supplier

Expanded Customer Base

Opens new customer opportunities, increasing dealer revenue and profit

- New customers can also benefit from a system that easily integrates with their existing access control system

and Your Customer

Immediate Access

From event video tagging and quick links

- Find past events faster and easier
- Live and recorded video can be viewed from both the e3 Access Control and the Linear NVR

Absentee Monitoring

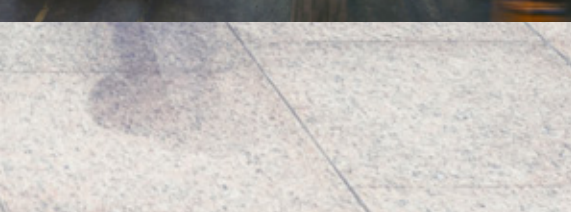
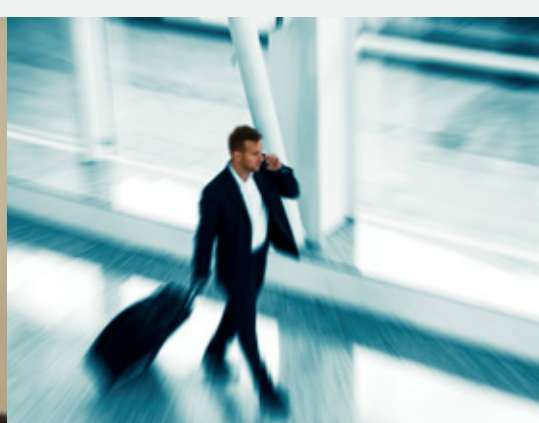
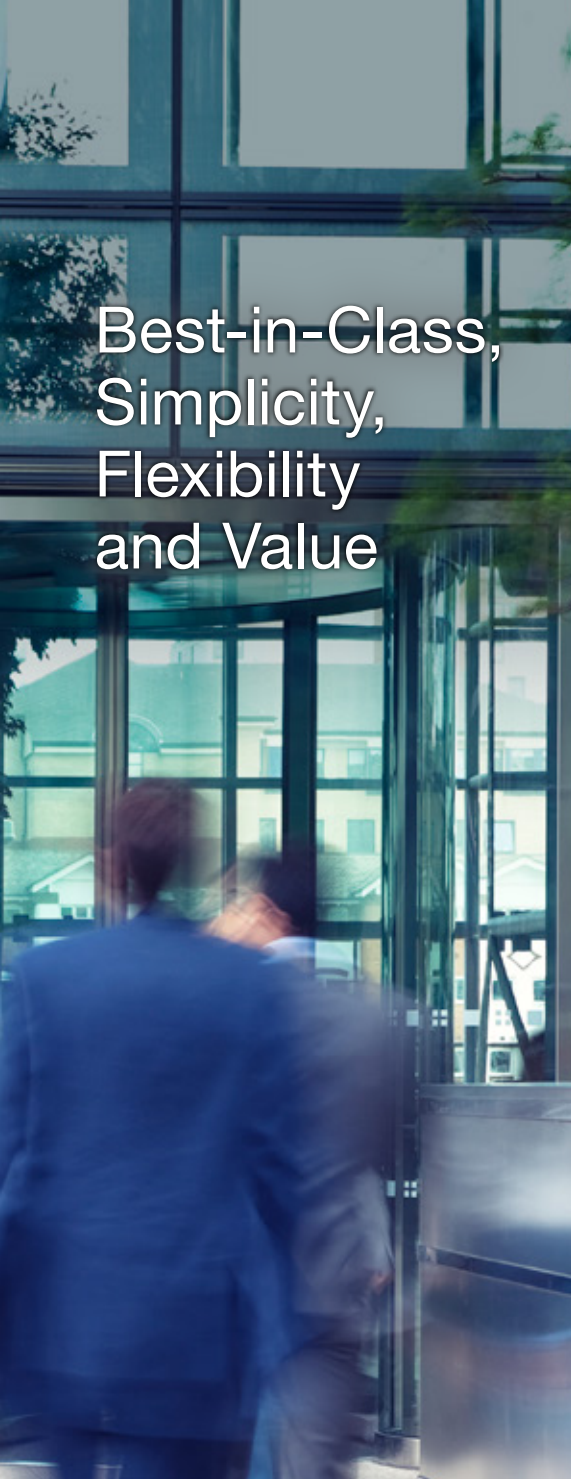
Included IntelliVision® Analytics provides active monitoring and notification for specified events

Proactive Notifications

AI processing at the camera edge minimizes processing time of detected events; greatly reducing false positives and notification time

Advanced Analytics

- **Video Motion Detection** – detects valid motion, filtering out noise, such as lighting changes and tree/animal movements
- **Camera Tamper/Fault Detection** – detects any fault or attempt to tamper with the camera, partially or completely blocking its field of view, or drastically changing the camera angle
- **Intrusion Detection** – provides automated perimeter monitoring and secure area protection
- **Line Crossing** – detects a moving object which crosses the defined line; Entry/exit direction can be defined and line can be drawn in any direction
- **Object Abandoned** – detects an object that has been left unattended for too long / Looks for objects that are not part of the normal scene
- **Object Removed** – can detect when specific objects have been removed from the scene
- **Loitering** – detects when a person has been in a specified area for more than a specified time



FEATURES & SPECIFICATIONS

IV200 SERIES



KEY FEATURES

Video Compression

H265, H264

Resolution

2MP

Lens

Fixed or Motorized



IntelliVision® Analytics

Motion Detection
Camera tamper
Intrusion Detector

Model / Order #	IV200-2DFW	IV200-2DVW	IV200-2BFW	IV200-2BVW	IV200-2TFW
Product Description	2MP Fixed Lens Dome Camera	2MP Varifocal Lens Dome Camera	2MP Fixed Lens Bullet Camera	2MP Varifocal Lens Bullet Camera	2MP Fixed Lens Turret Camera
CPU	Multimedia SOC (System-on-Chip)	Multimedia SOC (System-on-Chip)	Multimedia SOC (System-on-Chip)	Multimedia SOC (System-on-Chip)	Multimedia SOC (System-on-Chip)
Flash	128 MB	128 MB	128 MB	128 MB	128 MB
RAM	256 MB	256 MB	256 MB	256 MB	256 MB
Image Sensor	1/2.9" Progressive CMOS	1/2.9" Progressive CMOS	1/2.9" Progressive CMOS	1/2.9" Progressive CMOS	1/2.9" Progressive CMOS
Max Resolution	1920 x 1080 (2MP)	1920 x 1080 (2MP)	1920 x 1080 (2MP)	1920 x 1080 (2MP)	1920 x 1080 (2MP)
Focal Length	2.8 mm Fixed	2.8 mm to 12 mm	2.8 mm Fixed	2.8 mm to 12 mm	2.8 mm Fixed
Aperture	F2.0	F1.4 to F2.8	F2.0	F1.4 to F2.8	F2.0
Iris Type	Fixed-Iris	Fixed-Iris	Fixed-Iris	Fixed-Iris	Fixed-Iris
WDR Technology	WDR Pro	WDR Pro	WDR Pro	WDR Pro	WDR Pro
S/N Ratio	68dB	68dB	68dB	68dB	68dB
Day/Night	Yes	Yes	Yes	Yes	Yes
Field of View Horizontal/Vertical/Diagonal	109°/59°/129°	32-93°/18°-50°/37°-110°	81°/44°/95°	32-93°/18°-50°/37°-110°	109°/59°/129°
Ethernet	RJ-45 (I0/I00Base-T)	RJ-45 (I0/I00Base-T)	RJ-45 (I0/I00Base-T)	RJ-45 (I0/I00Base-T)	RJ-45 (I0/I00Base-T)
Internal Storage	MicroSD/SDHC/SDXC	MicroSD/SDHC/SDXC	MicroSD/SDHC/SDXC	MicroSD/SDHC/SDXC	MicroSD/SDHC/SDXC
Audio IO	N/A	Built-in Mic, one-way audio, 5M range	N/A	N/A	Built-in Mic, one-way audio, 5M range
Power Input	PoE IEEE 802.3af Class 2	PoE IEEE 802.3af Class 0	PoE IEEE 802.3af Class 2	PoE IEEE 802.3af Class 0	PoE IEEE 802.3af Class 2
Power Consumption	Max. 6.49 W (IR on) Max. 3.6 W (IR off)	Max. 12.95 W (IR on) Max. 9 W (IR off)	Max. 6.49 W (IR on) Max. 3.6 W (IR off)	Max. 12.95 W (IR on) Max. 9 W (IR off)	Max. 6.49 W (IR on) Max. 3.1 W (IR off)
Dimensions	117.2 x 89.6 mm	133.15mm x 10 9.82mm	91.1 x 176.8 mm	85 x 85 x 214.5 mm	105 x 82.5 mm
Weight	540 g (1.2 lbs)	819 g (1.8 lbs)	530 g (1.17 lbs)	738g (1.6 ilbs)	453 g (1 lb)
Operating Temperature	-22°F to 140°F (-30°C to 60°C)	-22°F to 140°F (-30°C to 60°C)	-22°F to 140°F (-30°C to 60°C)	-22°F to 140°F (-30°C to 60°C)	-22°F to 140°F (-30°C to 60°C)
Humidity	90%	90%	90%	90%	90%
Ingress Protection	IP66, IK10 (Housing)	IP66, IK10 (Housing)	IP66, IK10 (Housing)	IP66, IK10 (Housing)	IP66, IK10 (Housing)
Regulatory	CE/FCC/UL	CE/FCC/UL	CE/FCC/UL	CE/FCC/UL	CE/FCC/UL

FEATURES & SPECIFICATIONS

IV400 SERIES



KEY FEATURES

Video Compression

H265, H264

Resolution

5MP at 20FPS or 4MP at 30FPS

Lens

Fixed or Motorized



IntelliVision® Analytics

Motion Detection
Camera tamper
Intrusion Detector

Loitering
Line Crossing
Object Left / Removed

Model / Order #	IV400-5DFW	IV400-5DVW	IV400-5BFW	IV400-5BVW
Product Description	AI 5MP Dome Fixed Lens Camera	AI 5MP Dome Motorized Varifocal Lens Camera	AI 5MP Bullet Fixed Lens Camera	AI 5MP Bullet Motorized Varifocal Lens Camera
CPU	64-bit ARM® Quad Core Cortex™-A53	64-bit ARM® Quad Core Cortex™-A53	64-bit ARM® Quad Core Cortex™-A53	64-bit ARM® Quad Core Cortex™-A53
Flash	256 MB	256 MB	256 MB	256 MB
RAM	512 MB	512 MB	512 MB	512 MB
Image Sensor	1/2.7" Progressive CMOS	1/2.7" Progressive CMOS	1/2.7" Progressive CMOS	1/2.7" Progressive CMOS
Max Resolution	2560x1920 (5MP)	2560x1920 (5MP)	2560x1920 (5MP)	2560x1920 (5MP)
Focal Length	2.8 mm	2.8 mm to 12 mm	2.8 mm	2.8 mm to 12 mm
Aperture	F2.0	F1.4 to F2.8	F2.0	F1.4 to F2.8
Iris Type	Fixed-iris	Fixed-iris	Fixed-iris	Fixed-iris
WDR Technology	WDR Pro	WDR Pro	WDR Pro	WDR Pro
S/N Ratio	65dB	61dB	67dB	67dB
Day/Night	Yes. Built-in IR illuminates up to 30 meters	Yes. Built-in IR illuminates up to 30 meters	Yes. Built-in IR illuminates up to 30 meters	Yes. Built-in IR illuminates up to 30 meters
Field of View Horizontal/Vertical/Diagonal	103°/76°/134°	30°-90°/23°-65°/38°-115°	76°/59°/100°	30°-90°/23°-65°/38°-115°
Ethernet	RJ-45 (I0/I00Base-T)	RJ-45 (I0/I00Base-T)	RJ-45 (I0/I00Base-T)	RJ-45 (I0/I00Base-T)
Internal Storage	MicroSD/SDHC/SDXC	MicroSD/SDHC/SDXC	MicroSD/SDHC/SDXC	MicroSD/SDHC/SDXC
Audio IO	N/A	Built-in Mic, one-way audio, 5M range	N/A	N/A
Power Input	PoE 802.3af Class 2 / Barrel Connector: 5.5mm O.D. 2.1mm I.D	PoE 802.3af Class 0 / Barrel Connector: 5.5mm O.D. 2.1mm I.D	PoE 802.3af Class 2 / Barrel Connector: 5.5mm O.D. 2.1mm I.D	PoE 802.3af Class 0 / Barrel Connector: 5.5mm O.D. 2.1mm I.D
Power Consumption	Max. 6.49 W (IR on) Max. 3.6 W (IR off)	Max. 6.49 W (IR on) Max. 3.6 W (IR off)	Max. 6.49 W (IR on) Max. 3.6 W (IR off)	Max. 6.49 W (IR on) Max. 3.6 W (IR off)
Dimensions	117.2 x 89.6 mm	133.7 x 103.8 mm	91.1 x 176.8 mm	85 x 85 x 214.5 mm
Weight	540 g (1.2 lbs)	819 g (1.8 lbs)	530 g (1.17 lbs)	738g (1.6 ilbs)
Working Temperature	-22°F to 140°F (-30°C to 60°C)	-22°F to 140°F (-30°C to 60°C)	-22°F to 140°F (-30°C to 60°C)	-22°F to 140°F (-30°C to 60°C)
Humidity	90%	90%	90%	90%
Ingress	IP66, IK10 (Housing)	IP66, IK10 (Housing)	IP66, IK10 (Housing)	IP66, IK10 (Housing)
Regulatory	CE/FCC/UL	CE/FCC/UL	CE/FCC/UL	CE/FCC/UL

FEATURES & SPECIFICATIONS

NVR SERIES



Model / Order #	LNVR1-08P	LNVR1-16P
Product Description	8-Channel NVR	16-Channel NVR
Rack Size	1U	1U
HDD Included	1 x 2TB	1 x 4TB
Resolution	QCIF-4K	QCIF-4K
Max. Internal HDDs	2	2
HDD Max Capacity (1)	16TB	16TB
RAID	RAID 0, 1	RAID 0, 1
PoE Ports	8-Channel	16-Channel
PoE Power Budget	120W	200W
Operating System	Embedded Linux	Embedded Linux
Local Video Output	1 x HDMI and 1 x VGA for local display	1 x HDMI and 1 x VGA for local display
Number of Hard Drives	2 x HDD bay	2 x HDD bay
Network	1 x Gigabit RJ45 Ethernet	1 x Gigabit RJ45 Ethernet
USB	2 x USB Ports (1 USB 2.0 in front and 1 USB 3.0 in Back)	2 x USB Ports (1 USB 2.0 in front and 1 USB 3.0 in Back)
Dimensions	360 mm (W) x 311 mm (D) x 44 mm (H)	360 mm (W) x 311 mm (D) x 44 mm (H)
Weight	3.16 kg (6.96 lbs) – without HDD	3.16 kg (6.96 lbs) – without HDD
Playback	8-CH Live View 4-CH Synchronous Playback (web console)	16-CH Live View 4-CH Synchronous Playback (web console)
Compression	H.265 / H.264 / MJPEG	H.265 / H.264 / MJPEG

For more information,
please contact your local
Linear sales professional.

LINEAR

www.linear-solutions.com

